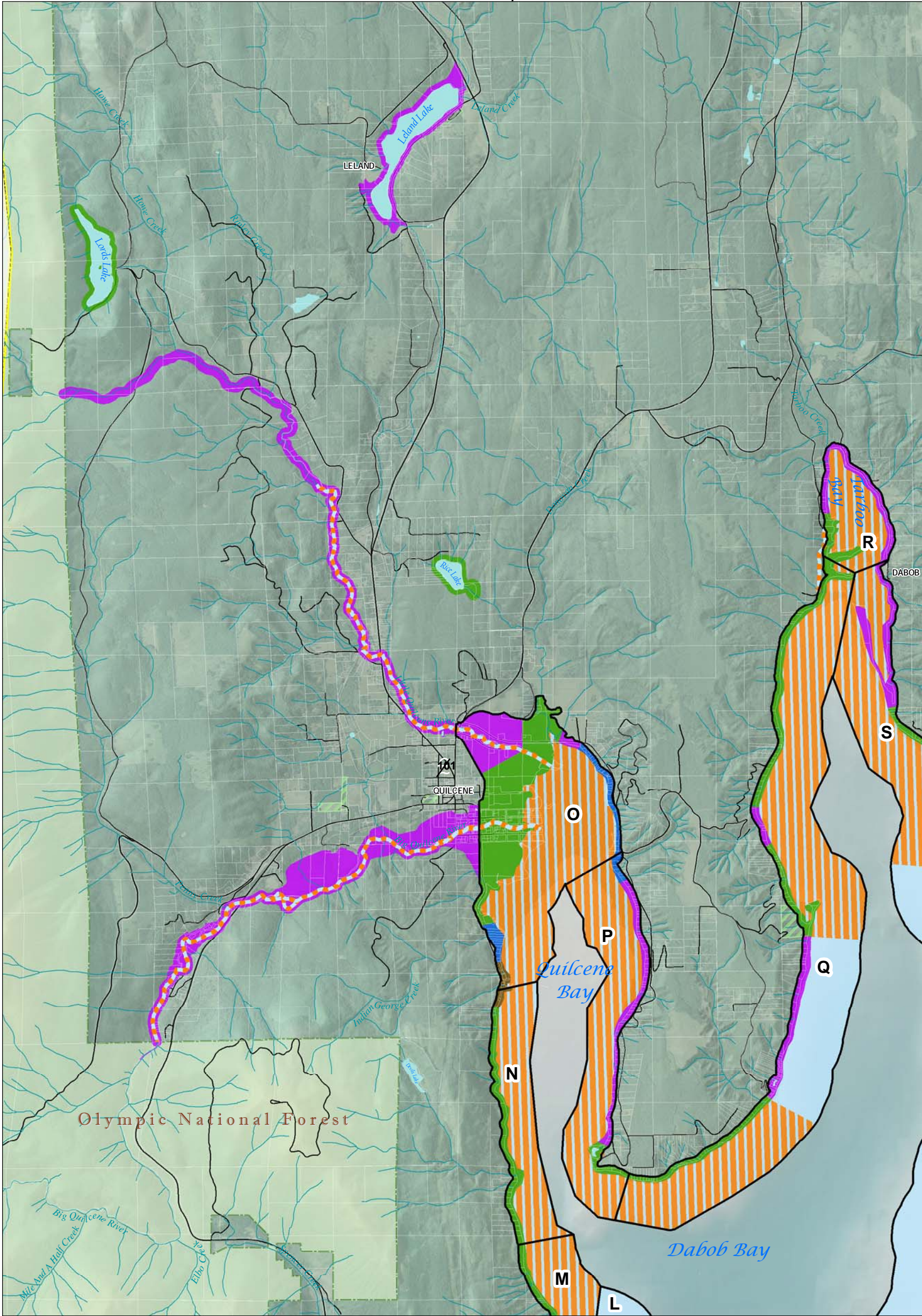


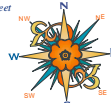
Map # 10. Leland



Map # 17. Brinnon

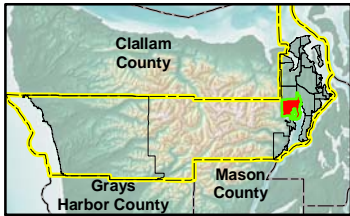
Map # 16. Quilcene  
Jefferson County, Washington  
December 7, 2009

File: Q:\MapDocs\DCD\SMF2009\SED\_110009\_Map16\_Quilcene.mxd  
Printing Date: Thursday, November 19, 2009  
Prepared By: Doug Nelson/GISP  
ArcMap Build Number: 9.3.1770  
Coordinate System:  
NAD 1983 StatePlane Washington North FIPS 4601 Feet  
Datum: North American 1983  
2009 Jefferson County GIS  
DISCLAIMER  
Jefferson County does not attest to the accuracy  
of the data contained herein and makes no  
warranty with respect to its correctness or validity.  
Data contained in this map is limited by  
the method and accuracy of its collection.



Shoreline Environmental Designation		Parcels
	Aquatic	Road
	Priority Aquatic	Jefferson County
	Natural	Other County Boundary
	Conservancy	National Park
	Shoreline Residential	National Forest
	High Intensity	Wilderness Area
	NA	Wildlife Refuge
	Priority Aquatic	Parks and Recreation
	Marine Shoreline Planning Area	Military Reserve

0 0.25 0.5 1 Miles



1:50,000

This map is intended for planning purposes only.

The Official Shoreline Map shows the environment designations that apply to each segment of the shoreline planning area. It does not necessarily identify or depict the precise lateral extent of shoreline jurisdiction or all associated wetlands. The lateral extent of the shoreline jurisdiction at the parcel level shall be determined on a case-by-case basis at the time a shoreline development is proposed. The actual extent of shoreline jurisdiction requires a site-specific evaluation to identify the location of the ordinary high water mark and any associated wetlands.

The County shall maintain a Geographic Information Systems database that depicts the coordinates for locating the upstream extent of shoreline jurisdiction (that is, the location where the mean annual stream flow is at least 20 cubic feet per second). The database shall also show the limits of the floodplain, floodway, and channel migration zones, and such information shall be used, along with site-specific information on the location of the ordinary high water mark and associated wetlands, to determine the lateral extent of shoreline jurisdiction on a parcel-by-parcel basis. The database shall be updated regularly as new information is made available and the public shall have access to the database upon request.