

KEY AREAS

WATER QUALITY - EAST JEFFERSON COUNTY

ALTERATIONS

Island - WRIA 6

Island - WRIA 6

Elwha-Dungeness - WRIA 18

Elwha-Dungeness - WRIA 18

Quilcene-Snow - WRIA 17

Quilcene-Snow - WRIA 17

Queets-Quinault - WRIA 21

Queets-Quinault - WRIA 21

Skokomish-Dosewallips - WRIA 16

Skokomish-Dosewallips - WRIA 16

Kitsap - WRIA 15

Kitsap

NOTES:

This map is intended for planning purposes only.

KEY AREAS

* Storage/ Removal Areas = high and moderate permeability, floodplains, NWI wetlands, and hydric soils on 2% slopes, and all lakes, streams, and rivers

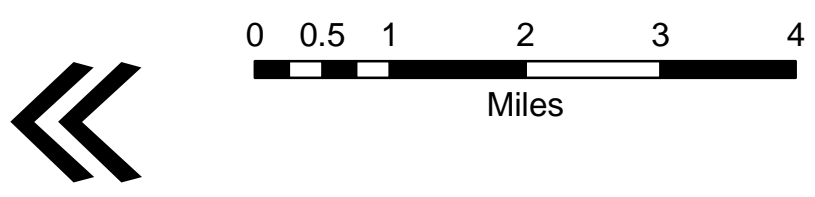
ALTERATIONS

* Human Imprint = high intensity land use, transportation, agriculture, and urban land

* Altered Storage = lost wetlands, human imprint on key storage areas

* Increased Inputs = dairy farms, septic, tilled fields

Shorelines of the state are based on WAC 173-18-200 and 173-20-340, the existing Jefferson County SMP (1989), and on 20-ft limits from USGS (1989) per Maps 1A and 1B.



MAP 4
JEFFERSON COUNTY WATER QUALITY - EASTERN JEFFERSON COUNTY
JEFFERSON COUNTY SHORELINE MAP FOLIO
JUNE, 2008

Legend

- Jefferson County Boundary
- WRIA Boundaries
- Watershed
- Wetlands
- Permeability
 - High
 - Medium
- Dairy Farms
- Septic Permits
- Tilled Fields
- Lost Wetlands
- Human Imprint
- Hydric Soils on 2% Slopes
- Streams
- Lake
- Waterbodies